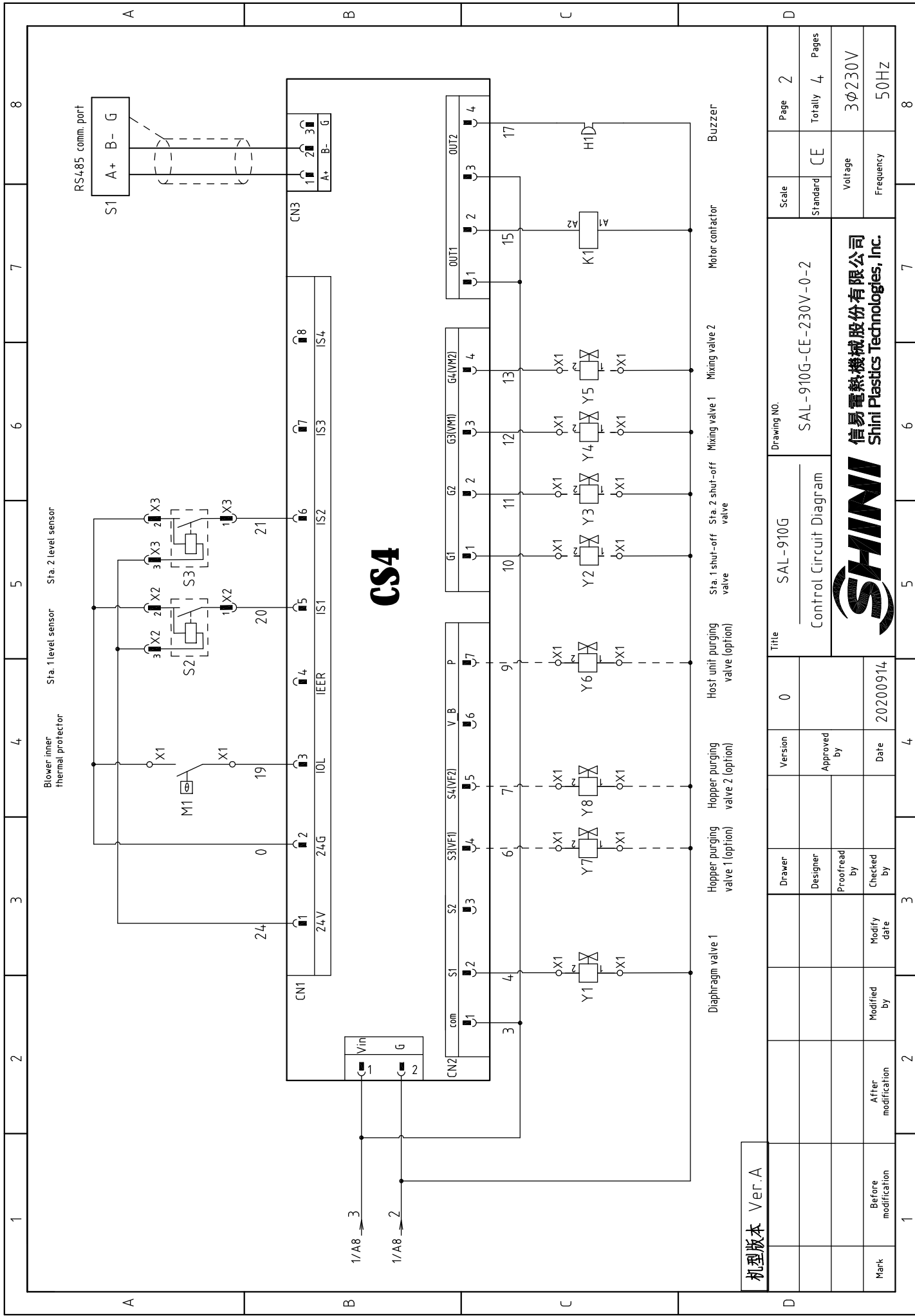


机型版本 Ver.A

D	Scale	Page 1	8
	Standard	CE	
Drawing No.		SAL-910G-CE-230V-0-1	
Title		SAL-910G Main Circuit Diagram	
Version		0	
Drawer			
Designer		Approved by	
Proofread by		Date 20200914	
Checked by		4	
Modified by		3	
After modification		2	
Before modification		1	
Mark		7	
Voltage		3φ230V	
Frequency		50Hz	



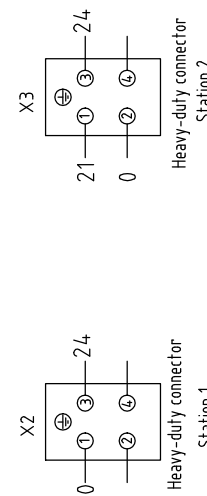
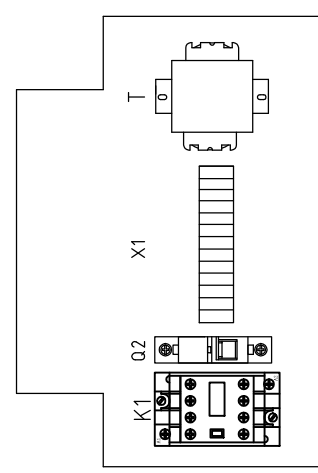
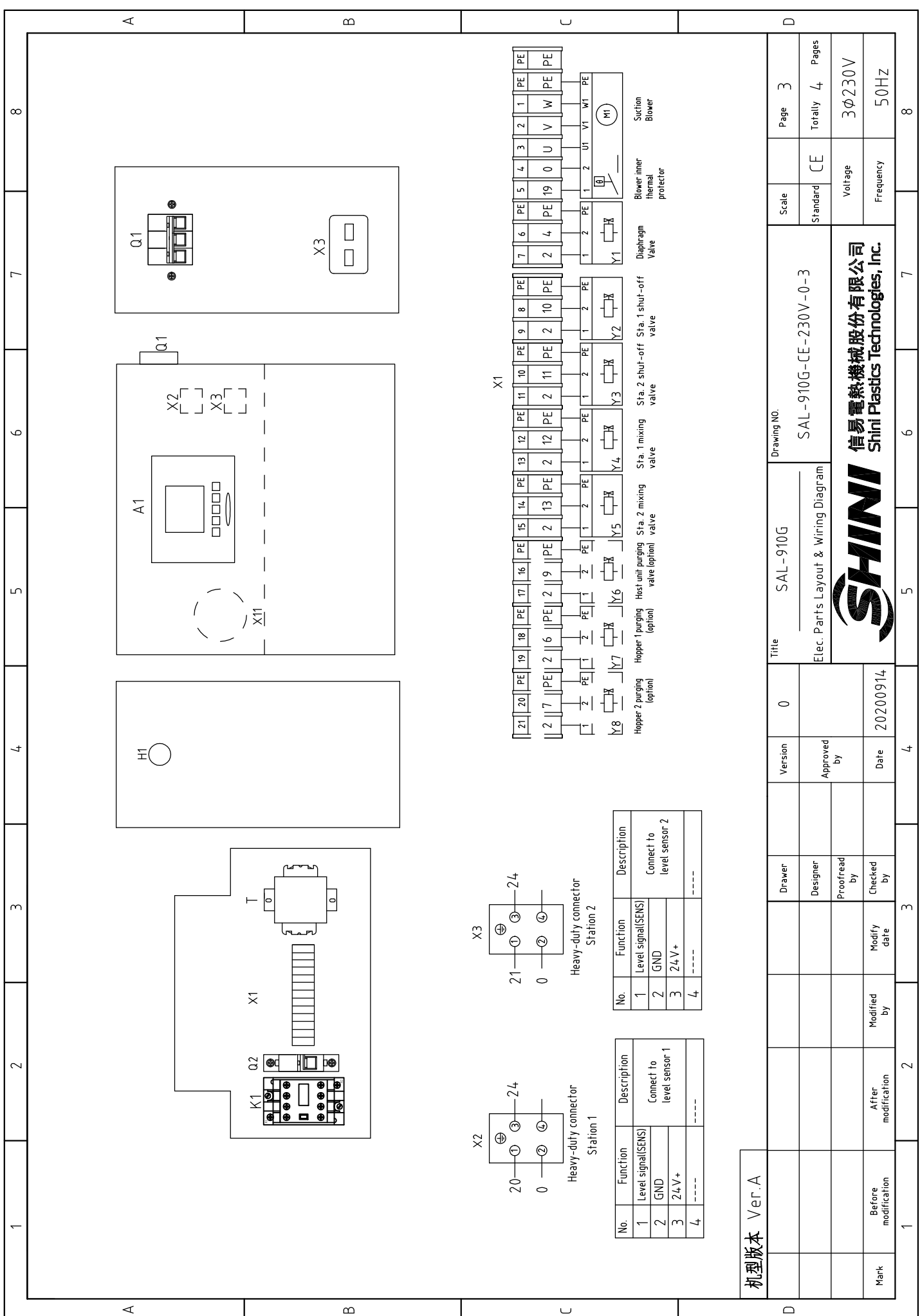


CS4

机型版本	Ver.A
Mark	Before modification
	Modified by
	Modify date
	Checked by
	Proofread by
	Designer
	Drawer
	Version
	0
	Title
	SAL-910G
	Control Circuit Diagram
	Drawing No.
	SAL-910G-CE-230V-0-2
	Scale
	CE
	Standard
	Page
	2
	Totally
	4
	Pages
	3φ230V
	Voltage
	50Hz
	Frequency

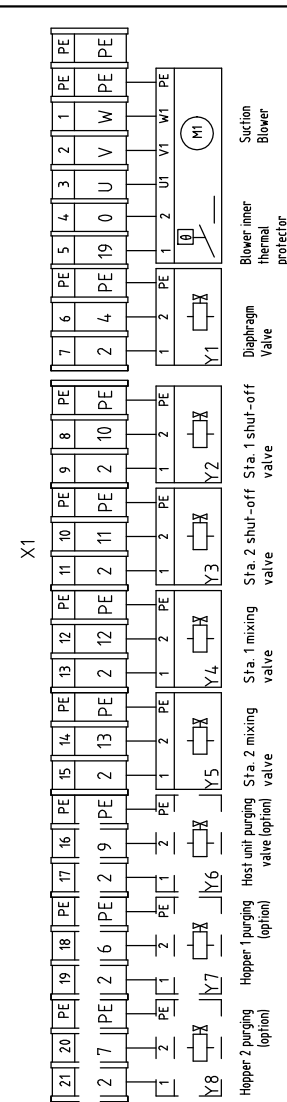


Diaphragm valve 1 Hopper purging valve 1 (option) Hopper purging valve 2 (option) Host unit purging valve (option) Sta. 1 shut-off valve Sta. 2 shut-off valve Mixing valve 1 Mixing valve 2 Motor contactor Buzzer



No.	Function	Description
1	Level signal(SENS)	Connect to level sensor 2
2	GND	
3	24V+	
4	----	----

No.	Function	Description
1	Level signal(SENS)	Connect to level sensor 1
2	GND	
3	24V+	
4	----	----



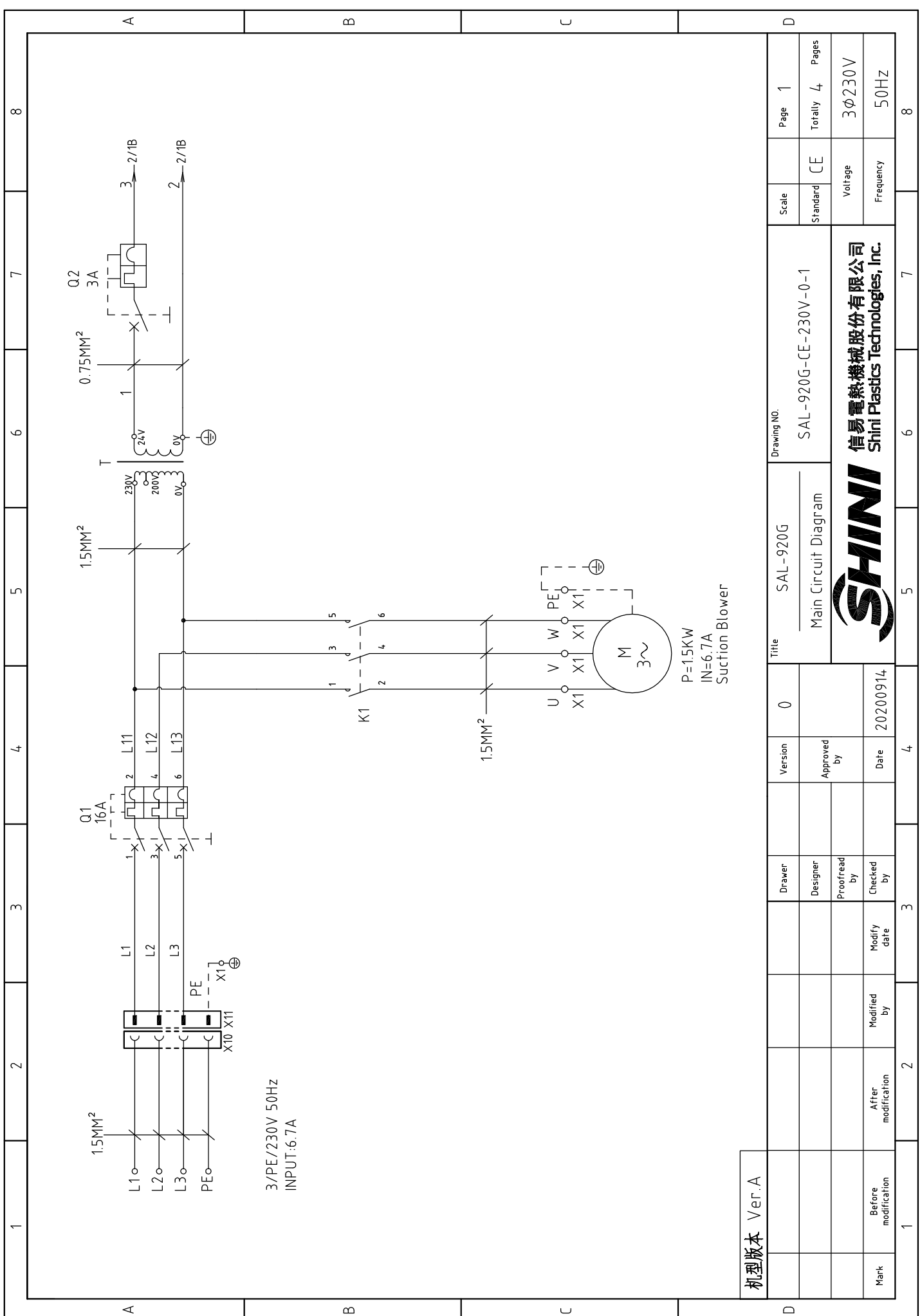
机型版本 Ver.A

Title		SAL-910G		Drawing No.		SAL-910G-CE-230V-0-3		Scale	Page
Version		0		Approved by				Standard	Totally
Date		20200914		Checked by				Voltage	Pages
Modified by				Modify date				Frequency	
Before modification				After modification				3φ230V	3
Mark								50HZ	4
									8



1		2		3		4		5		6		7		8	
N0	Symbol	Name	Manufacturer	Type	Specification	Number	Material number	Remark							
1	X11	Industrial hidden socket	QX	QX-813 4P/16A(male)	4P/16A	1	YE62081300000								
2	Q1	Circuit-breakers	TECO	BM-63C/3010S	10A	1	YE40301003000								
3	Q2	Circuit-breakers	TECO	BM-63C/1003S	3A 1P	1	YE40100203000								
4	K1	AC Contactors	SCHNEIDER	LC1-D09M7C	24VAC	1	YE00972400000								
5	A1	Controller	YUYUN	CS4	24VAC/DC	1	YE80042401200								
6	S1	RS-485 comm. plate	YUYUN	---	Dsub-9pin connector	1	YE90048501200								
7		Shell RS485(SAL-700G-A-19)ver.0	bincheng	---	PCS	1	YR40048500000								
8	H1	Buzzer	APT	PK-35A	24VAC/DC	1	YE84003500600								
9	T	Transformer	JIUXIN	230V/200V OUT=24V	80VA	1	YE70023005200								
10	X1	Terminal board	HONEYWELL	SK2.5	2.5mm ²	11	YE60002503200								
11		Terminal board	HONEYWELL	GK2.5PE	2.5PE	5	YE60002503400								
12		Terminal board	HONEYWELL	SK2.5	2.5mm ²	2	YE60002503200	(2)							
13		Terminal board	HONEYWELL	GK2.5PE	2.5PE	1	YE60002503400	(2)							
14		Terminal board	HONEYWELL	SK2.5	2.5mm ²	4	YE60002503200	(3)							
15		Terminal board	HONEYWELL	GK2.5PE	2.5PE	2	YE60002503400	(3)							
16		Terminal fittings E/GK series	HONEYWELL	---	PCS	2	YE60000003900								
17	X2 X3	Heavy duty connectors	HARTING	Han E-4F(female)	4P	2	YE68000401400								
18	M	Blower	SHINI	RB-310	1HP 230V 50HZ	1	---	(1)							
19	Y1 - Y5	Solenoid Valve	AIRTAC	---	24VAC	5	---	(1)							
20	S2 S3	Photo sensor switch	FOTEK	MT-4MNO-30VDC	10...30VDC	2	---	(1)SVH							
21		Magnetic reed switch	SONON	BN12-30BLA	24VDC	2	---	(1)SMH							
<p>机型版本 Ver.A Notes: (1) Materials not in the control box; (2) Host unit purging; (3) Optional hopper purging valve;</p>															
D		Title		Drawing No.		Scale		Page		Standard		Voltage		Frequency	
		SAL-910G		SAL-910G-CE-230V-0-4		CE		4		CE		3φ230V		50HZ	
Mark		Before modification		After modification		Modified by		Modify date		Checked by		Date		20200914	
1		2		3		4		5		6		7		8	



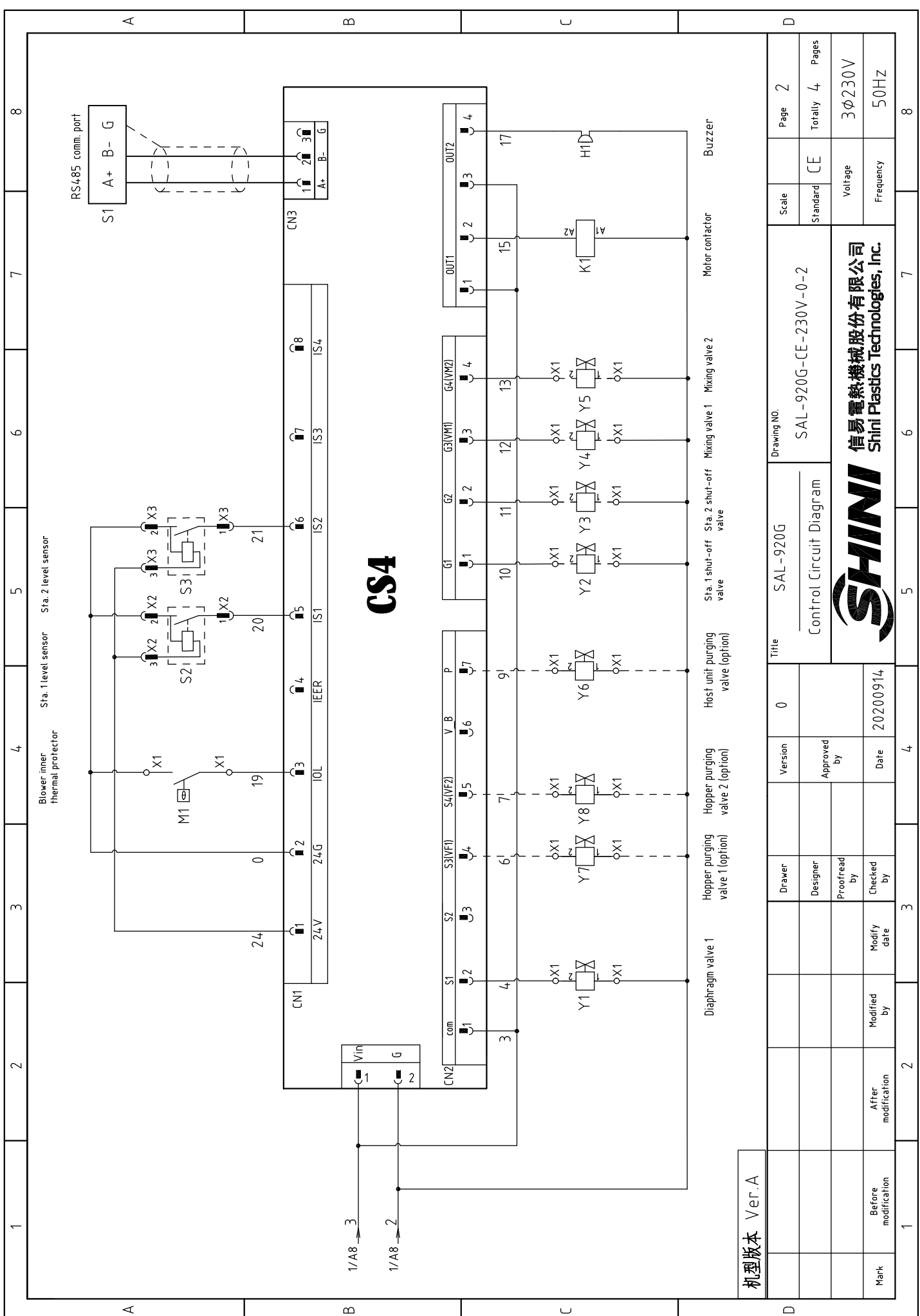


3/PE/230V 50Hz
INPUT:6.7A

P=1.5KW
IN=6.7A
Suction Blower

机型版本	Ver.A
Mark	Before modification
	After modification
	Modified by
	Modify date
	Checked by
	Proofread by
	Designer
	Drawer
Version	0
Date	20200914

Title		SAL-920G		Drawing No.		SAL-920G-CE-230V-0-1	
Main Circuit Diagram		Scale		Page		1	
SHINI		Standard		CE		Totally	
信易電熱機械股份有限公司 Shini Plastics Technologies, Inc.		Voltage		3φ230V		4	
		Frequency		50Hz		8	



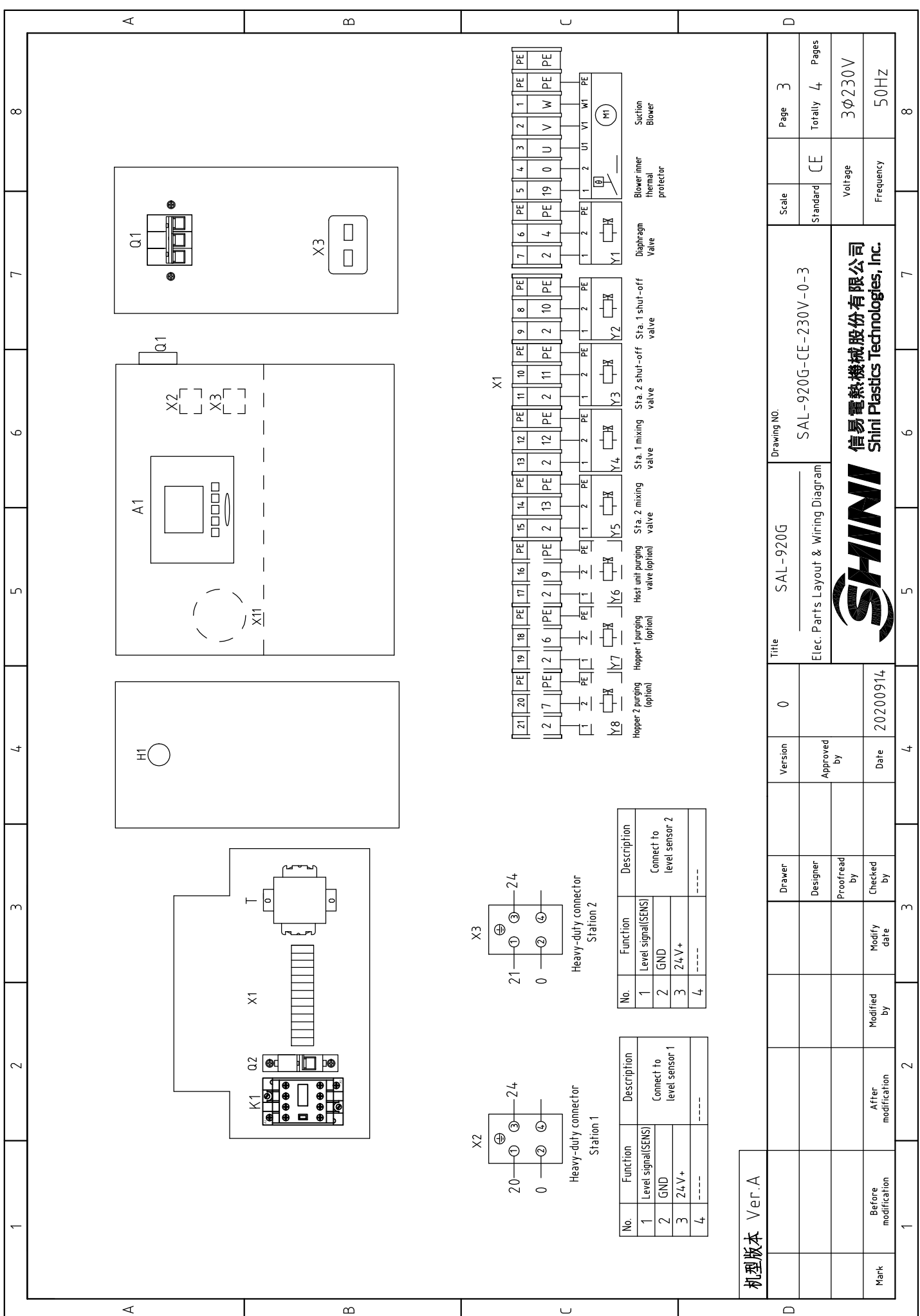
CS4

机型版本 Ver.A

Mark	Before modification	Modified by	Modify date	Version	0	Title	SAL-920G		Drawing No.	SAL-920G-CE-230V-0-2		Scale	Page	2
	After modification	Modified by	Modify date		Approved by		20200914	Control Circuit Diagram		Standard	CE		Totally	4
										Voltage	3Φ230V			
										Frequency	50HZ			



信易電熱機械股份有限公司
Shini Plastics Technologies, Inc.



1 2 3 4 5 6 7 8

A B C

A B C

1 2 3 4 5 6 7 8

A B C

1 2 3 4 5 6 7 8

A B C

1 2 3 4 5 6 7 8

A B C

1 2 3 4 5 6 7 8

A B C

1 2 3 4 5 6 7 8

A B C

1 2 3 4 5 6 7 8

A B C

1 2 3 4 5 6 7 8

A B C

1 2 3 4 5 6 7 8

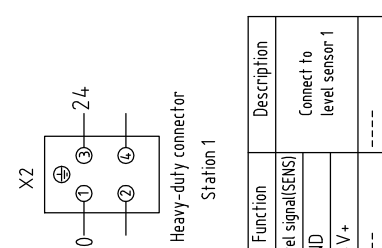
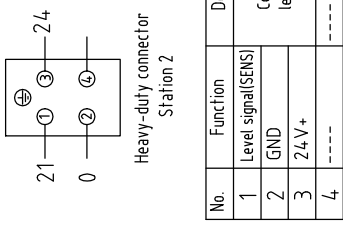
A B C

1 2 3 4 5 6 7 8

A B C

1 2 3 4 5 6 7 8

A B C



No.	Function	Description
1	Level signal(SENS)	Connect to level sensor 1
2	GND	
3	24V+	
4	----	----

No.	Function	Description
1	Level signal(SENS)	Connect to level sensor 2
2	GND	
3	24V+	
4	----	----

机型版本 Ver.A

Title		SAL-920G		Drawing No.		SAL-920G-CE-230V-0-3		Scale	Page
Elec. Parts Layout & Wiring Diagram								Standard	Totally
Version		0		Approved by				Voltage	3Φ230V
Date		20200914		Checked by				Frequency	50Hz
Modified by				Modify date				8	
After modification				Proofread by				Blower	
Before modification				Designer				Blower thermal protector	
				Drawer				Diaphragm Valve	
				Proofread by				Blower inner thermal protector	
				Checked by				Suction Blower	



1		2		3		4		5		6		7		8																																																	
N0	Symbol	Name	Manufacturer	Type	Specification	Number	Material number	Remark																																																							
1	X11	Industrial hidden socket	QX	QX-813 4P/16A (male)	4P/16A	1	YE62081300000																																																								
2	Q1	Circuit breakers	TECO	BM-63C/3016S	16A	1	YE40301603000																																																								
3	Q2	Circuit breakers	TECO	BM-63C/1003S	3A 1P	1	YE40100203000																																																								
4	K1	AC contactors	SCHNEIDER	LC1-D09M7C	24VAC	1	YE00972400000																																																								
5	A1	Controller	YUYUN	CS4	24VAC/DC	1	YE80042401200																																																								
6	S1	RS-485 comm. plate	YUYUN	---	Dsub-9pin connector	1	YE90048501200																																																								
7		Shell RS485(SAL-700G-A-19)ver.0	bincheng	---	PCS	1	YR40048500000																																																								
8	H1	Buzzer	APT	PK-35A	24VAC/DC	1	YE84003500600																																																								
9	T	Transformer	JIUXIN	230V/200V OUT=24V	80VA	1	YE70023005200																																																								
10	X1	Wiring terminal	HONEYWELL	SK2.5	2.5mm ²	11	YE60002503200																																																								
11		Wiring terminal	HONEYWELL	GK2.5PE	2.5PE	5	YE60002503400																																																								
12		Wiring terminal	HONEYWELL	SK2.5	2.5mm ²	2	YE60002503200	(2)																																																							
13		Wiring terminal	HONEYWELL	GK2.5PE	2.5PE	1	YE60002503400	(2)																																																							
14		Wiring terminal	HONEYWELL	SK2.5	2.5mm ²	4	YE60002503200	(3)																																																							
15		Wiring terminal	HONEYWELL	GK2.5PE	2.5PE	2	YE60002503400	(3)																																																							
16		Terminal fittings E/GK series	HONEYWELL	---	PCS	2	YE60000003900																																																								
17	X2 X3	Heavy duty connectors	HARTING	Han E-4F(female)	4P	2	YE68000401400																																																								
18	M	Blower	SHINI	RB-420	2HP 230V 50HZ	1	---	(1)																																																							
19	Y1-Y5	Solenoid vavle	AIRTAC	---	24VAC	5	---	(1)																																																							
20	S2 S3	Photosensor switch	FOTEK	MT-4MNO-30VDC	10...30VDC	2	---	(1) SVH																																																							
21		Magnetic reed switch	SONON	BN12-30BLA	24VDC	2	---	(1) SMH																																																							
机型版本 Ver.A Notes: (1) Materials not in the control box; (2) Host unit purging; (3) Optional hopper purging valve;																																																															
<table border="1" style="width:100%; border-collapse: collapse;"> <tr> <td colspan="2">Title</td> <td colspan="2">Drawing No.</td> <td colspan="2">Scale</td> <td colspan="2">Page</td> </tr> <tr> <td colspan="2">SAL-920G</td> <td colspan="2">SAL-920G-CE-230V-0-4</td> <td colspan="2">CE</td> <td colspan="2">4</td> </tr> <tr> <td colspan="2">Elec. Parts List 1</td> <td colspan="2"></td> <td colspan="2">Standard</td> <td colspan="2">Totally 4</td> </tr> <tr> <td colspan="2"></td> <td colspan="2"></td> <td colspan="2">Voltage</td> <td colspan="2">3φ230V</td> </tr> <tr> <td colspan="2"></td> <td colspan="2"></td> <td colspan="2">Frequency</td> <td colspan="2">50HZ</td> </tr> </table>																Title		Drawing No.		Scale		Page		SAL-920G		SAL-920G-CE-230V-0-4		CE		4		Elec. Parts List 1				Standard		Totally 4						Voltage		3φ230V						Frequency		50HZ									
Title		Drawing No.		Scale		Page																																																									
SAL-920G		SAL-920G-CE-230V-0-4		CE		4																																																									
Elec. Parts List 1				Standard		Totally 4																																																									
				Voltage		3φ230V																																																									
				Frequency		50HZ																																																									
<table border="1" style="width:100%; border-collapse: collapse;"> <tr> <td colspan="2">Version</td> <td colspan="2">Approved by</td> <td colspan="2">Date</td> <td colspan="2">Page</td> </tr> <tr> <td colspan="2">0</td> <td colspan="2"></td> <td colspan="2">20200914</td> <td colspan="2">4</td> </tr> <tr> <td colspan="2">Drawer</td> <td colspan="2">Designer</td> <td colspan="2">Checked by</td> <td colspan="2">Mark</td> </tr> <tr> <td colspan="2"></td> <td colspan="2"></td> <td colspan="2"></td> <td colspan="2"></td> </tr> <tr> <td colspan="2">After modification</td> <td colspan="2">Modified by</td> <td colspan="2">Modify date</td> <td colspan="2">Before modification</td> </tr> <tr> <td colspan="2"></td> <td colspan="2"></td> <td colspan="2"></td> <td colspan="2"></td> </tr> </table>																Version		Approved by		Date		Page		0				20200914		4		Drawer		Designer		Checked by		Mark										After modification		Modified by		Modify date		Before modification									
Version		Approved by		Date		Page																																																									
0				20200914		4																																																									
Drawer		Designer		Checked by		Mark																																																									
After modification		Modified by		Modify date		Before modification																																																									
信易電熱機械股份有限公司 Shini Plastics Technologies, Inc.																																																															
<table border="1" style="width:100%; border-collapse: collapse;"> <tr> <td colspan="2">1</td> <td colspan="2">2</td> <td colspan="2">3</td> <td colspan="2">4</td> <td colspan="2">5</td> <td colspan="2">6</td> <td colspan="2">7</td> <td colspan="2">8</td> </tr> </table>																1		2		3		4		5		6		7		8																																	
1		2		3		4		5		6		7		8																																																	