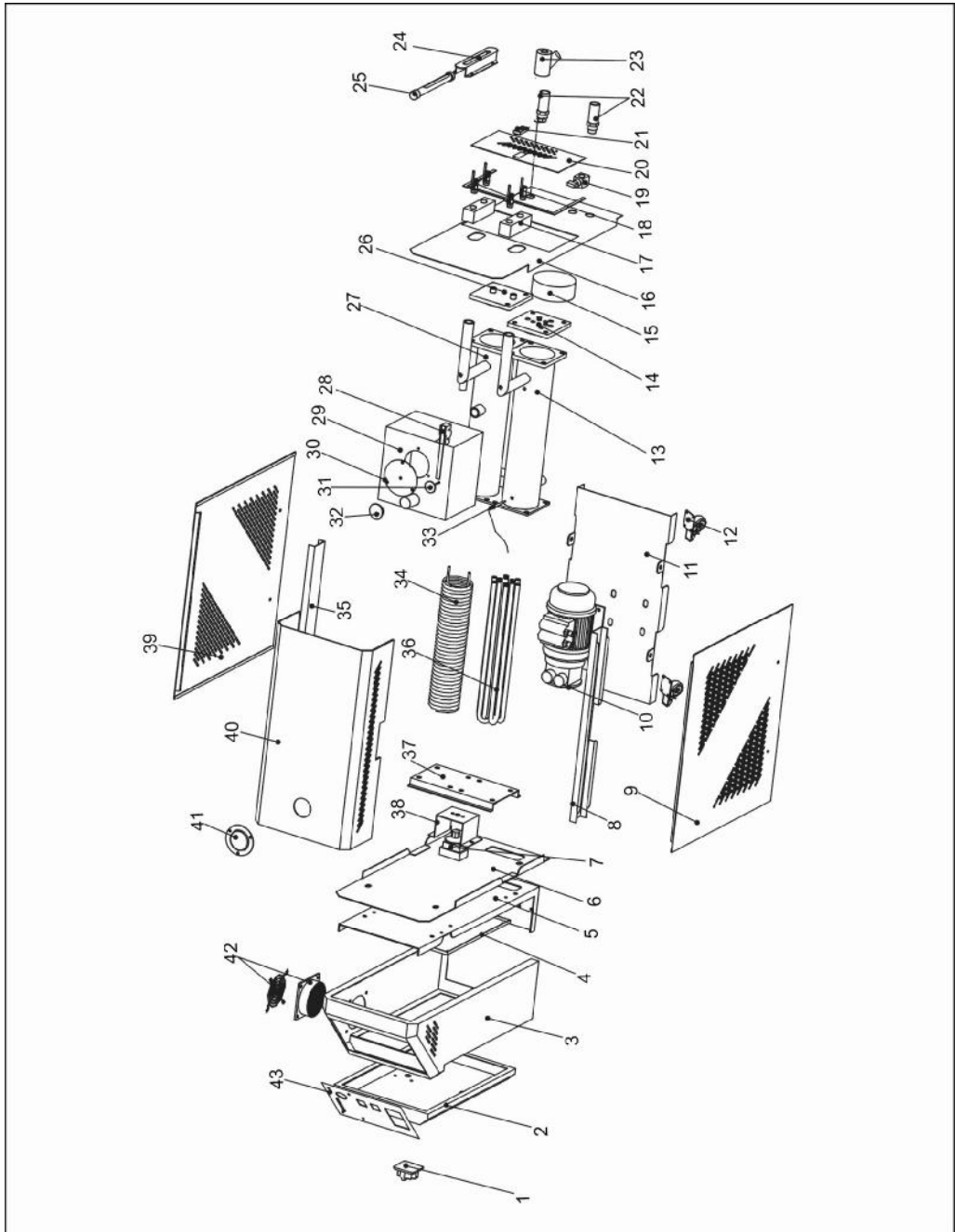


## 2.2 Assembly Drawing

### 2.2.1 Assembly Drawing (STM-607~1220)



Remarks: Please refer to material list 2.2.2 for specific explanation of the Arabic numbers in parts drawing.

Picture 2-2: Assembly Drawing (STM-607~1220)

## 2.2.2 Parts List (STM-607~STM-1220)

Table 2-1: Parts List (STM-607/STM-607-D)

No.	Name	Part No.	
		STM-607	STM-607-D
1	Main switch*	YE10200300000	YE10220300000
2	Door plate	BL40060700920	BL40691040720
3	Control box	BL40060702520	BL40060740220
4	Electrical components board	BL40060701920	BL40060704020-
5	Control box rear plate	BL40060702120	BL40691041120
6	Middle plate	BL40060701420-	BL40691040120
7	EGO*	YE21503000000	YE21503000000
8	Right beam	-	-
9	Right side plate	BL40060703720	-
10	Pump*	BM20005500250	BM20005500250
11	Bottom plate	BL40060740320	BL40060740120
12	Castor	YW03000200000	YW03000300200 YW03000300000
13	Heating tank	BK40060700320	BK40060700320
14	Heating tank flange	BL40060702320	BL40060702320
15	Pipe heater cover	BL80091000120	BL80091000120
16	Rear plate	BL42060703820	BL40691040220-
17	Water flow distributor	-	-
18	Ball valve	YW50030800100	YW50030800100
19	Solenoid valve**	YE32213100000	YE32213100000
20	Rear cover	-	-
21	Plastic handle	YR40523000000	YR40523000000
22	Copper joint	BH12030801310	BH12030801310
23	Y type strainer*	YW57010200000	YW57010200000
24	Level indicator cover	-	-
25	Level indicator*	BH12060700210	BH12060700210
26	Cooling tank flange	BL42691049420	BL42691049420
27	Cooling tank	BL49060730020	BL49060730020
28	Microswitch	YE14152400000	YE14152400000
29	Oil tank	BL42060700321	BL42060700321
30	Floating ball chamber cover*	BL40060703220	BL40060703220
31	Floating ball	BL40060702620	BL40060702620
32	Oxidxed aluminum oil lap	BH12030403040	BH12030403040
33	Thermocouple	BE90100000150	BE90100000150
34	Cooling pipes	BL49060710020	BL49060710020
35	Left beam	-	-

No.	Name	Part No.	
		STM-607	STM-607-D
36	Pipe heater*	BH70060700050	BH70060700050
37	Heating tank mounting plate	-	-
38	EGO mounting plate	-	-
39	Left side plate	-	-
40	Top cover	-	-
41	Pressure meter	YW85001000100	YW85001000100
42	Cooling fan + fan guard*	YM60922500100	YM60922500100
43	Nameplate	YR01004000000	YR01004000000

\* means possible broken parts.

\*\* means easy broken part. and spare backup is suggested.

Please confirm the version of manual before placing the purchase order to guarantee that the item number of the spare part is in accordance with the real object.

Table 2-2: Parts List (STM-910/STM-910-D)

No.	Name	Part No.	
		STM-910	STM-910-D
1	Main switch*	YE10210300000	YE1025040000
2	Door plate	BL40060700920	BL40691040720
3	Control box	BL40060700920	BL40691040720
4	Electrical components board	BL40060702520	BL40060740220
5	Control box rear plate	BL40060701920	BL40060704020-
6	Middle plate	BL40060702120	BL42091001320
7	EGO*	YE21503000000	YE21503000000
8	Right beam	-	BL42091001220
9	Right side plate	BL42091000520	BL42091002020
10	Pump*	BM20007500050	BM20007500050
11	Bottom plate	BL41091045820	BL40122040120
12	Castor	YW03000200000-	YW03000300200 YW03000300000
13	Heating tank	BL40091000321	BL40091000321
14	Heating tank flange	BL42091000220	BL42091000220
15	Pipe heater cover	BL80091000120	BL80091000120
16	Rear plate	BL42091002120	BL41091005620
17	Water flow distributor	-	-
18	Ball valve	YW50030800100	YW50030800100
19	Solenoid valve**	YE32213100000	YE32213100000
20	Rear cover	-	-
21	Plastic handle	YR40523000000	YR40523000000
22	Copper joint	BH12131200010	BH12030801110
23	Y type strainer*	YW57010200000	YW57010200000
24	Level indicator cover	BL41091001321	BL41091001321
25	Level indicator*	BH12060700210	BH12060700210
26	Cooling tank flange	BL42691049420	BL42691049420
27	Cooling tank	BL49091000420	-BL49091000420
28	Microswitch	YE14152400000	YE14152400000
29	Oil tank	BL40091000521	BL40091000521
30	Floating ball chamber cover*	BL42091000420	BL42091001620
31	Floating ball	BL40060702620	BL40060702620
32	Oxidxed aluminum oil lap	BH12030403040	BH12030403040
33	Thermocouple	BE90100000150	BE90100000150
34	Cooling pipes	BW88091000020	BW88091000020
35	Left beam	-	BL42091001220
36	Pipe heater *	BH70091000050	BH70091000050

No.	Name	Part No.	
		STM-910	STM-910-D
37	Heating tank mounting plate	BL42091002320	BL42091002320
38	EGO mounting plate	YR40000400300	YR40000400300
39	Left side plate	BL42091000520	BL42091002020
40	Top cover	BL40060700520	BL41091005720
41	Pressure meter	YW85001000100	YW85001000100
42	Cooling fan + fan guard*	YM60922500100	YM60922500100
43	Nameplate	YR01004000000	YR01004000000

\* means possible broken parts.

\*\* means easy broken part. and spare backup is suggested.

Please confirm the version of manual before placing the purchase order to guarantee that the item number of the spare part is in accordance with the real object.

Table 2-3: Parts List (STM-1220)

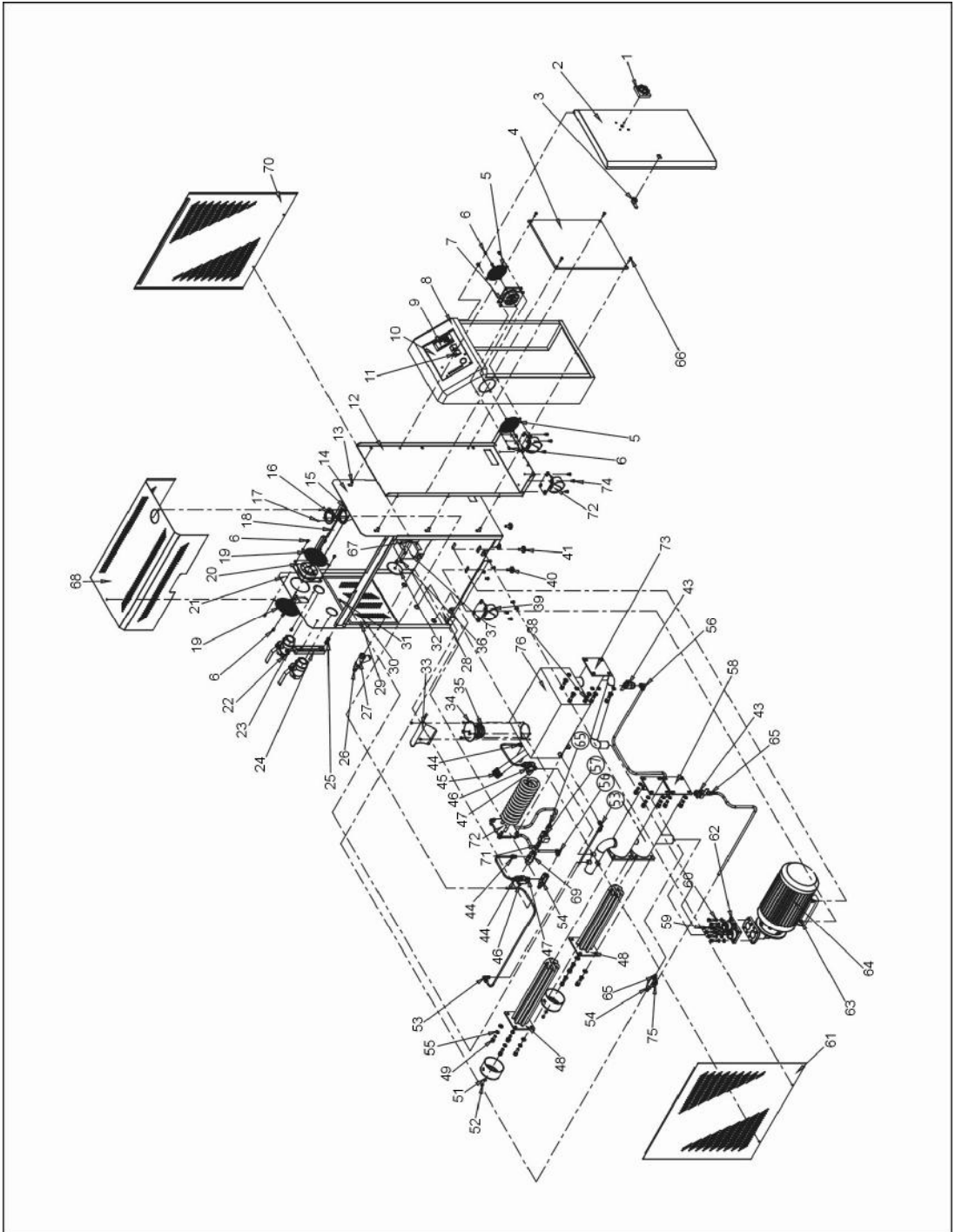
No.	Name	Part No.	No.	Name	Part No.
1	Main switch*	YE10220300000	23	Y type strainer*	YW57010200000
2	Door plate	BL40122041120	24	Level indicator cover	-
3	Control box	BL40122041020	25	Level indicator*	BH12060700210
4	Electrical components board	BL40122041220	26	Cooling tank flange	-
5	Control box rear plate	BL40122041420	27	Cooling tank	BL42012000020
6	Middle plate	BL40122040620	28	Microswitch	YE14152400000
7	EGO*	YE21503000000	29	Oil tank	BL40122041620
8	Right beam	-	30	Floating ball chamber cover*	BL42091001620
9	Right side plate	BL40122040220	31	Floating ball	BL40060702620
10	Pump*	BM20015000050	32	Oxidxed aluminum oil lap	BH12030403040
11	Bottom plate	BL40122040720	33	Thermocouple	BE90100000150
12	Castor	YW03002500000	34	Cooling pipes	BW88122000020
13	Heating tank	-	35	Left beam	-
14	Heating tank flange	-	36	Main Switch*	BH70122000050
15	Pipe heater cover	BL80091000120	37	Pipe heater*	-
16	Rear plate	BL40122040820	38	Heating tank mounting plate	YR40000400300
17	Water flow distributor	-	39	EGO mounting plate	BL40122040220-
18	Ball valve	YW50030400000	40	Left side plate	BL40122040520
19	Solenoid valve**	YE32213100000	41	Top cover	YW85001000100
20	Rear cover	-	42	Pressure meter	YM60922500100
21	Plastic handle	YR40523000000	43	Cooling fan + fan guard*	YR01004000000
22	Copper joint	BH12131200010			

\* means possible broken parts.

\*\* means easy broken part. and spare backup is suggested.

Please confirm the version of manual before placing the purchase order to guarantee that the item number of the spare part is in accordance with the real object.

### 2.2.3 Assembly Drawing (STM-2440)



Remarks: Please refer to material list 2.2.4 for specific explanation of the Arabic numbers in parts drawing.

Picture 2-3: Assembly Drawing (STM-2440)

## 2.2.4 Parts List (STM-2440)

Table 2-4: Parts List (STM-2440)

No.	Name	Part No.	No.	Name	Part No.
1	Main switch*	YE1025040000	28	Ground plate	BL42244001620
2	Door plate	BL41244010220	29	Mini cover board of backboard planker	BL42244000920
3	long door lock	YW00000000100	30	Mini cover board of backboard	BL42244000920
4	Electric-controlled ground plate	BL40244040920	31	M6×15 butterfly screw	YW69061500000
5	Fan web	YM60922500100	32	EGO revolving button	YE21503000000
6	M6×10 lentilheaded screw	YW62061000000	33	Microswitch cover	-
7	Fan	YM60922500100	34	Cover board of floating ball	-
8	Electric controlled cabinet	BH49243000150	35	Floater	BL42244000521
9	Temperature control meter*	YE85005000000	36	M4×5 lentil headed screw	YW62040500000
10	Operation panel	YR01004000000	37	EGO installation board	YR40000400300
11	Full form switch	YE14152400000	38	M10×20 inner hexagon screw	YW61102000000
12	Backboard of electric controlled cabinet	-	39	Braking plastic core-rubber-tires	YW03000300000
13	M8×15 inner hexagon screw	YW60081600100	40	M8×30 inner hexagon screw	YW60083000200
14	Clapboard	BL40244040720	41	D8 flap gasket	YW66081600000
15	Installation board of pressure gauge	-	42	Movable truckle	YW03000300200
16	Pressure gauge	YW85001000100	43	3 Branches ball valve	YW50030800100
17	M3×5 lentil heatedb	YW63030600000	44	1/4"PT×1/4"H Teflon pipe connection	BH12010400410
18	Beam	BL40244040620	45	3/4" Oil cap	BH12030403040
19	Fan net	YM60922500100	46	2 Branches ball valve	YW50010400000
20	Fan	YM60922500100	47	1/4" Copper connection with external teeth at the two ends	BH12010400110
21	Backboard	BL42244001020	48	Electric heat tube unit*	BH70244000050
22	1 1/4 ball valve	YW50012500000	49	M10×25 Inner hexagon screw	YW61102500000
23	M12 fastening screw	YW68121000000	50	Electric heat tube shield	BL80122000120
24	Fluid level glass**	BH12060700210	51	D6 Flat gasket	YW66061300000
25	1/4H connector	YW04030800500	52	M6 Nut	YW64000600300
26	Core	BH12030801110	53	1/4"PT×1/4"H Teflon pipe connection(L-type)	YW04010400400
27	Water filter valve**	YW57010200000	54	Copper connection 2	BH12060702010



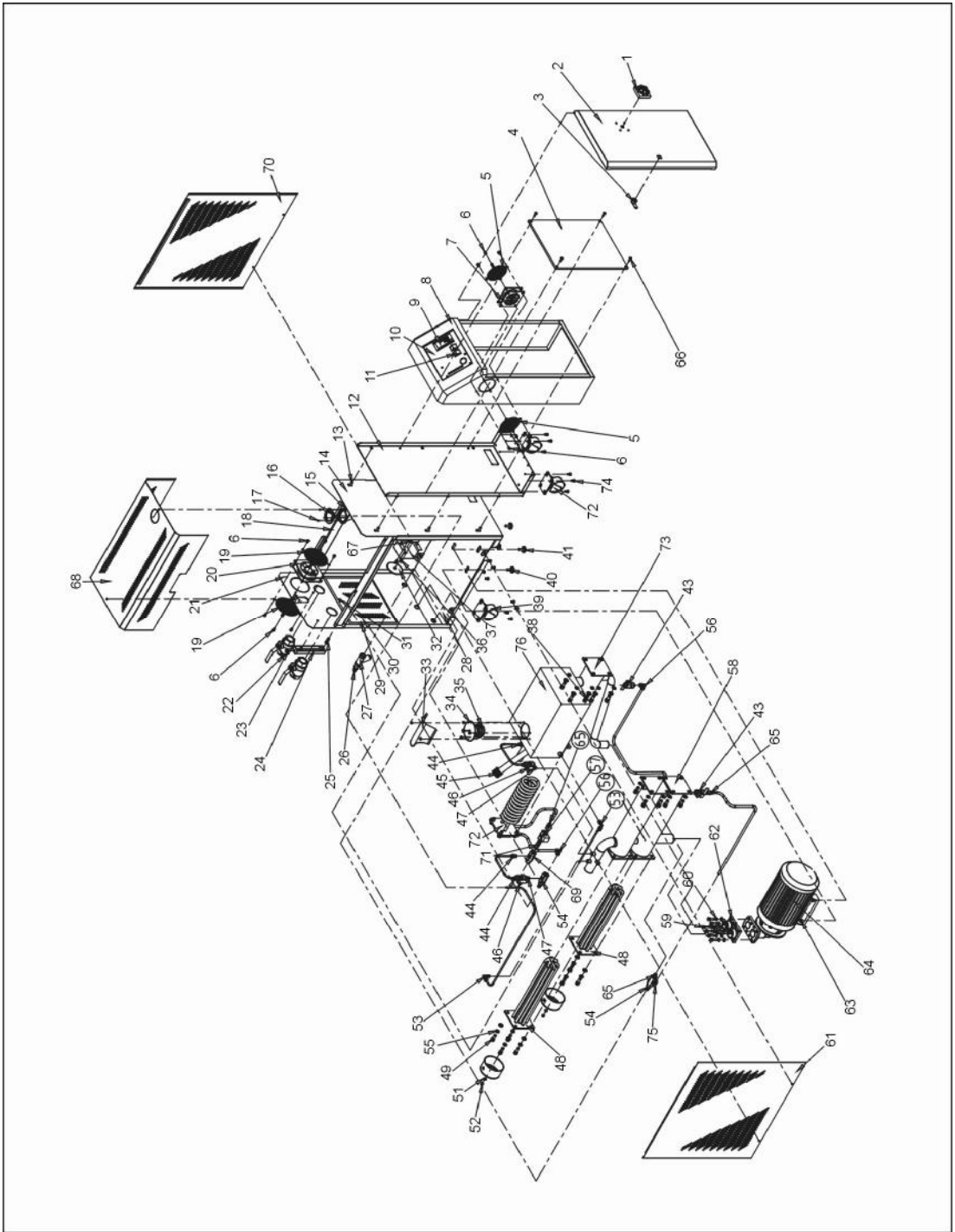
No.	Name	Part No.	No.	Name	Part No.
55	D10 Elastic washer	YW65010000000	66	M6×15 lentil heated screw	YW63061500000
56	3/8"PT×3/8"H Teflon pipe connection (L-type)	YW04030800300	67	EGO*	YE21503000000
57	Solenoid valve**	YE32213100000	68	Cover	BL40244040220
58	Heating bucket	BL42244000221	69	Copper connection 1	BH12030800010
59	M8×25 Inner hexagon screw	YW6108250010	70	Side plate (right)	BL42244001720
60	D8 Elastic washer	YW65008000100	71	3/8" Copper connection with external teeth at the two ends	BH12030800110
61	Side plate (left)	BL42244001720	72	Condensation pipe	BW88244030020
62	Pump flange	BW31015000010	73	Cooler bucket	BL42244000121
63	M8 Nut	YW65008000100	74	M6×10 Inner hexagon screw	YW60061000000
64	Water pump	BM20028000050	75	1/4"PT×3/8"H Teflon pipe connection(L-type)	YW04030800200
65	3/8"PT×3/8"H Teflon pipe connection	BH12030800610	76	Droppable fuel tank	BL42244000421

\* means possible broken parts.

\*\* means easy broken part. and spare backup is suggested.

Please confirm the version of manual before placing the purchase order to guarantee that the item number of the spare part is in accordance with the real object.

## 2.2.5 Assembly Drawing (STM-3650)



Remarks: Please refer to material list 2.2.6 for specific explanation of the Arabic numbers in parts drawing.

Picture 2-4: Assembly Drawing (STM-3650)

## 2.2.6 Parts List (STM-3650)

Table 2-5: Parts List (STM-3650)

No.	Name	Part No.	No.	Name	Part No.
1	Main switch*	YE10010000000	28	Ground plate	BL42365001720
2	Door plate	BL40365041320	29	Mini cover board of backboard planker	BL42365000420-
3	long door lock	YW00000000100	30	Mini cover board of backboard	BL42365000520-
4	Electric-controlled ground plate	BL40365041420	31	M6×15 butterfly screw	YW69061500000
5	Fan web	YM60922500100	32	EGO revolving button	YE21503000000
6	M6×10 lentiheaded screw	YW62061000000	33	Microswitch cover	-
7	Fan	YM60121200400	34	Cover board of floating ball	-
8	Electric controlled cabinet	BH49365000250	35	Floater	-
9	Temperature control meter*	YE85005000000	36	M4×5 lenti headed screw	YW62040500000
10	Operation panel	YR01004000000	37	EGO installation board	YR40000400300
11	Full form switch	YE14152400000	38	M10×20 inner hexagon screw	YW61102000000
12	Backboard of electric controlled cabinet	BL42365001520	39	Braking plastic core-rubber-tires	YW03000300000
13	M8×15 inner hexagon screw	YW60081600100	40	M8×30 inner hexagon screw	YW60083000200
14	Clapboard	BL40365040620	41	D8 flap gasket	YW66081600000
15	Installation board of pressure gauge	-	42	Movable truckle	YW03000300200
16	Pressure gauge	YW85001000100	43	3 Branches ball valve	YW50030800100
17	M3×5 lenti heatedb	YW63030600000	44	1/4"PT×1/4"H Teflon pipe connection	BH12010400410
18	Beam	BL40365040520	45	3/4" Oil cap	BH12030403040
19	Fan net	YM60423000000	46	2 Branches ball valve	YW50010400000
20	Fan	YM60423000000	47	1/4" Copper connection with external teeth at the two ends	BH12010400110
21	Backboard	BL40365040720	48	Electric heat tube unit*	BH70365000050
22	1 1/4 ball valve	YW50012500000	49	M10×25 Inner hexagon screw	YW61102500000
23	M12 fastening screw	YW68121000000	50	Electric heat tube shield	BL80122000120
24	Fluid level glass**	BH12060700210	51	D6 Flat gasket	YW66061300000
25	1/4H connector	YW04030800500	52	M6 Nut	YW64000600300
26	Core	BH12030801110	53	1/4"PT×1/4"H Teflon pipe connection(L-type)	YW04010400400
27	Water filter valve**	YW57010200000	54	Copper connection 2	BH12060702010

No.	Name	Part No.	No.	Name	Part No.
55	D10 Elastic washer	YW65010000000	66	M6×15 lentil heated screw	YW63061500000
56	3/8"PT×3/8"H Teflon pipe connection(L-type)	YW04030800300	67	EGO*	YE21503000000
57	Solenoid valve**	YE32213100000	68	Cover	BL40365040320
58	Heating bucket	BL42365000221-	69	Copper connection 1	BH12030800010
59	M8×25 Inner hexagon screw	YW6108250010	70	Side plate (right)	BL40365040120
60	D8 Elastic washer	YW65008000100	71	3/8" Copper connection with external teeth at the two ends	BH12030800110
61	Side plate (left)	BL40365040220	72	Condensation pipe	-
62	Pump flange	BW31015000010	73	Cooler bucket	BL42365000121
63	M8 Nut	YW64080600000	74	M6×10 Inner hexagon screw	YW60061000000
64	Water pump	YM20609100100	75	1/4"PT*3/8"H Teflon pipe connection(L-type)	YW04030800200
65	3/8"PT×3/8"H Teflon pipe connection	BH12030800610			

\* means possible broken parts.

\*\* means easy broken part. and spare backup is suggested.

Please confirm the version of manual before placing the purchase order to guarantee that the item number of the spare part is in accordance with the real object.